

2021 - 2022

**Return-to-School (In-Person)
and Continuity of Services Plan**

STRONG START – District Commitment

SAFE START – Health/Safety Practices

SURE START – In-Person Instruction

Release 1.0 08.12.21

Return-to-School and Continuity of Services Plan

Table of Contents

	Page Number
STRONG START:	
District Commitment	2
SURE START:	
In-Person Instruction	3
SAFE START:	
Health and Safety	4
RESOURCES	
Health and Education	8
REVISIONS	
Added As Necessary	10+

STRONG START: District Commitment

Dear Doss CCSD Families, Students, and Community,

August 12, 2021

The Doss School team is excited about a **STRONG START** for our new year!

We look forward to seeing students on Monday, August 23rd for the first day of school. Last year we persevered and were able to keep students in school all year. Be reassured that we remain committed to student and staff safety, so we encourage communication and feedback. Even with the recent pandemic surge and uncertainty, our theme for the year is **One More Day: Making Every Day Count!**

STRONG START – District Commitment

As an education institution, we are committed to health, education, and welfare. The safety of students and staff is paramount, so we will continue to be in contact with the Texas Education Agency (TEA), elected officials, and state and local health authorities. Following current guidance regarding public health and school instruction, we will offer in-person instruction this school year. TEA and CDC guidance will drive all school plans.

SURE START – In-Person Instruction

Results from stakeholder engagement surveys will provide guidance for our schedule for in-person instruction. With a focus on academics, we will provide enrichment activities. Additional funds received from ESSER III and TCLAS grants will support academics, enrichment, special services, and teacher training. The 87th Legislative session made some changes regarding assessments, and these will be described in future communications.

SAFE START – Health and Safety Protocols

Considering health guidance, we have identified safety practices for activities in the classroom, on the playground, in common areas, on the bus, et cetera. These are included in this plan, which will be modified, as necessary. Please review these procedures and contact us with any questions or comments. Thank you for supporting the Doss vision to **inspire curiosity, respect tradition, and embrace excellence.**

We hope your children are excited for a **STRONG START!**

Respectfully,



Pam Seipp, Administrative Consultant



**One More Day:
Making Every Day Count!**

VISION: Curiosity, Tradition, and Excellence

SURE START: In-Person Instruction

IN-PERSON INSTRUCTION

Doss CCSD will provide in-person instruction for the school year. COVID-19 has posed some challenges for most schools, students, and parents. Doss CCSD continues to move forward responding to the pandemic and addressing student learning needs. Doss School will use screeners and/or benchmark assessments to identify student strengths, learning gaps, and disabilities.

Based on screening results, Doss will provide learning interventions and/or accelerations that will lead toward student progress and growth. For all students, teachers will incorporate differentiated learning that will continuously adapt for student growth and acceleration. The 87th Legislative Session recently passed HB 4545 that outlines new guidelines for students who did not meet expectations on STAAR.

The requirements of HB 4545 will be provided parents of students at STAAR levels in a separate communication. Briefly, an accelerated learning plan (ALP) will be developed for students who did not meet passing standards on STAAR. The accelerated learning plan may include additional learning before school, after school, during school, or in the summer. The timeline and resources may be found on the TEA website: https://tea.texas.gov/sites/default/files/covid/TAA_HB%204545_Implementation%20Overview.pdf

ACADEMIC ASSURANCE

- All students will be provided regular and special instruction on-campus.
- All curriculum is fully aligned to the TEKS and designed to ensure coverage.
- The instructional calendar and schedule meet the minimum requirements.
- All families will be provided with communications about expectations and support.

INSTRUCTIONAL PLANNING

To address lost instructional time, unfinished learning, and potential learning gaps, Doss CCSD will build a school schedule that includes opportunities for in-school acceleration, intervention, and enrichment. Teachers will plan high-quality lessons focused on individual student needs on the mastery of State standards.

Besides the required screening and assessments, teachers will use diagnostic and formative assessments to provide timely information to help identify the necessary “just-in-time” interventions. Teachers will identify and focus on the most essential standards to guarantee a solid foundation within and across the grade levels.

PROFESSIONAL COLLABORATION

Doss CCSD administrators, teachers, and contracted consultants have worked this summer to develop a strategic plan for school improvement and increased student learning. Partners in developing the plan included TEA RSSP Partners, ESC 13 Consultants, and local content specialists.

SAFE START – Health and Safety Practices

BACKGROUND

This **SAFE START** plan has been developed to aid the district in creating a return to school where employees, students, and families feel safe and to reduce the impact of COVID-19. While it is not possible to eliminate all risk of furthering the spread of COVID-19, this guidance document contains information on practices that attempt to minimize the virus spread.

Health and safety practices in this plan are based on guidance from the Centers for Disease Control (CDC), American Academy of Pediatrics, the Texas Department of State Health Services, and applicable federal, state, and local agencies. Regular updates will be made, and modifications may be necessary based on public health and governmental directives and advancing scientific knowledge on the transmissibility of COVID-19.

SAFE START PRACTICES

1. **PROVIDE NOTICE:** Doss will provide notice to parents and staff when necessary.
2. **PREVENT:** Doss will implement practices to prevent the virus from entering the school.
3. **RESPOND:** Doss will respond to a lab-confirmed case in the school according to State guidelines.
4. **MITIGATE:** Doss will implement prevention and mitigation practices to reduce the likelihood that an outbreak occurs on-campus.

CLOSE CONTACT

This document refers to “close contact” with an individual who is lab confirmed to have COVID-19. Close contact is determined by the Centers for Disease Control (CDC). Close contact through proximity and duration of exposure is defined as:

Someone who was within six feet of an infected person (laboratory-confirmed or a clinically compatible illness) for a cumulative total of 15 minutes or more over a 24-hour period. In the K-12 indoor classroom, the Centers for Disease Control (CDC) recommends schools maintain at least three (3) feet of physical distance between students within classrooms to reduce transmission risk.

In school close contact excludes students who were within 3 to 6 feet of an infected student if both the infected and the exposed student(s) correctly and consistently wore masks the entire time. When it is not possible to maintain a distance of at least three feet, it is important to layer multiple other prevention strategies.

STUDENTS WHO HAVE COVID

As determined by the Department of State Health Services (DSHS) Rule, schools must exclude students from attending school in person who are actively sick with COVID-19 or who have received a positive test result for COVID-19. Parents must ensure they do not send a child to school if the child has COVID-19 symptoms or is test-confirmed with COVID-19 until the conditions for re-entry are met.

If symptomatic, exclude until at least 10 days have passed since symptom onset, and fever free, and other symptoms have improved. Children who test positive for COVID-19 but do not have any symptoms must stay home until at least 10 days after the day they were tested.

During the stay-at-home period, there is no virtual learning option for students this year. The school, however, will provide academic work for students on an individual case-by-case process. Alternatively, schools may deliver remote conferencing outlined in the proposed *Student Attendance Accounting Handbook (SAAH)* rules. Please contact the school office for more information on these options.

STUDENTS WHO ARE CLOSE CONTACTS

Close contact determinations are based on guidance outlined by the CDC, which notes that individuals who are vaccinated are not considered close contacts. Given the data from 2020-2021 showing few transmission rates in a classroom setting, schools are not required to conduct contact tracing. If the school is made aware that a student is a close contact, the school is to notify the student’s parents.

Parents of students who are determined to be close contacts of an individual with COVID-19 may keep their students at home during the recommended stay-at-home period. For individuals who are determined to be close contacts, the stay-at-home period can end for students experiencing no symptoms on Day 10 after close contact exposure, if no subsequent COVID-19 testing is performed.

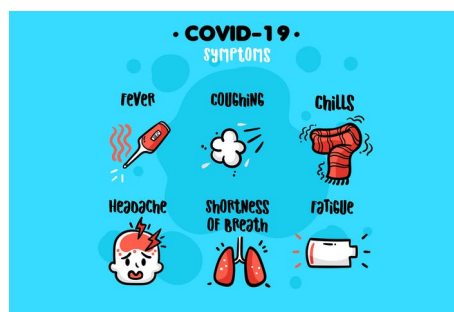
Alternately, students can end the stay-at-home period if they receive a negative result from a PCR acute infection test after the close contact exposure ends. During the stay-at-home period, there is no virtual learning option for students this year. The school, however, will provide academic work for students on an individual case-by-case process, including the possibility of remote conferencing.

DAILY AT HOME SCREENING

Parents/guardians are expected to screen their child(ren) for COVID-19 symptoms each day prior to sending them to school. We need cooperation in not sending children to school who are exhibiting COVID symptoms, especially if they are running a fever. When symptoms or a confirmed case is present, parents are expected to keep the child at home until the conditions for re-entry have been met.

People with COVID-19 have had a wide range of symptoms reported – ranging from mild symptoms to severe illness. Symptoms may appear 2-14 days after exposure to the virus. Anyone can have mild to severe symptoms. People with these symptoms may have COVID-19:

- Fever or chills
- Cough
- Shortness of breath or difficulty breathing
- Fatigue
- Muscle or body aches
- Headache
- New loss of taste or smell
- Sore throat
- Congestion or runny nose
- Nausea or vomiting
- Diarrhea



<https://www.cdc.gov/coronavirus/2019-ncov/symptoms-testing/symptoms.html>

This list does not include all symptoms. CDC will continue to update this list as we learn more about COVID-19. Older adults and people who have severe underlying medical conditions like heart or lung disease or diabetes seem to be at higher risk for developing more serious complications from COVID-19 illness.

Doss CCSD employees and consultants must report if they themselves have COVID-19 symptoms or are lab-confirmed with COVID-19, and, if so, they must remain off campus until they meet the criteria for re-entry. All Doss employees will be trained appropriately and use a standardized screening tool for all students and visitors. The district will follow the required notification process released by the Texas Education Agency in a release on August 19, 2021.

MASKS / FACE COVERINGS

The Centers for Disease Control (CDC) and the Department of State Health Services (DSHS) recommend the wearing of masks for students and employees. **As of July 29, 2021, and per Executive Order GA-38 school districts cannot require students or staff to wear a mask or face covering.** The Centers for Disease Control “recommends multiple layers of protection, including vaccination, mask use, and physical distancing.” Doss CCSD encourages students, staff, and visitors to stay safe, protect yourself, and wear a mask if you choose.

BUS / TRANSPORTATION

Parents who have the option of dropping off and picking up their child should opt to do so until COVID-19 ceases to be a threat. This will allow for better spacing on the bus. Prior to boarding, the temperature of every child will be taken. **Children with a temperature greater than 100.1 degrees will not be allowed to attend school.**

All children will be required to use sanitizer upon boarding and will be encouraged to wear a mask or face covering for personal safety. The bus will be cleaned and disinfected before and after each use. Windows will be opened to allow for better ventilation when feasible.

DISTRICT VISITORS

Parent involvement is important, but it is our top priority to keep our students and staff safe and reduce the risk of spreading COVID-19 and other potential infections. In the 2021-2022 school year, visitors will be permitted, but they will be limited.

- All visitors are required to contact the school for entry, and will be required to sign in.
- Face coverings are not required but may be worn by anyone comfortable doing so.
- The district will not allow visitors on campus with symptoms or with COVID-19.
- Visitors should utilize hand sanitizer upon entering the building or classroom.
- Telephone conferences and virtual meetings may be arranged for any conference.

ARRIVAL AT SCHOOL

- No student may be dropped off prior to 7:45 a.m. The school day begins at 7:55 a.m. Students are counted tardy if they arrive after 8:15 a.m.
- Upon arrival and prior to entering school, the temperature of every child will be taken. Children with a temperature greater than 100.1 degrees will not be allowed to attend school.
- Parents/Guardians are encouraged to remain in their vehicle when dropping off students. Teachers will approach the vehicle to check temperature and walk the student to the door.
- Hand sanitizer will be available at the main entrance to the campus, in classrooms, in the cafeteria and in common areas throughout the district.

CLASSROOM PROTOCOLS

- Teachers will monitor all students and refer them to office staff if symptoms are present.
- Teachers will distance students to the extent possible within the space allowed.
- Hand sanitizer stations will be available in classrooms and common areas.
- Teachers will require hand hygiene before and after all group activities.
- Teachers and staff will limit the use of shared supplies when possible.
- Surfaces will be disinfected in a room when new groups of students enter.
- Teachers will establish student responsibilities to disinfect personal areas and materials.

ISOLATION PROTOCOLS

- When a student has displayed symptoms of COVID-19, the teacher or school office will provide a clinical assessment to determine if and when a student needs to be sent home.
- Students who are ill will be separated from their peers and given a face mask. They should be picked up within 30 minutes and no later than one hour from the time of contacting the student's parent/guardian
- Sanitizing and disinfection will take place in all areas where the student was present.

COMMON AREAS AND TRANSITIONS

- Traffic patterns will be established to separate individuals or groups of students.
- When transitioning between classes, students will walk as far to the right as possible.

WATER

- Students will need to bring their own reusable water bottle for use throughout the day and expected to take water bottles home daily to be cleaned.
- Teachers will demonstrate how student should fill water bottles from the bottled water dispensers. No water fountains will be used by students or staff.

CAFETERIA/MEALTIMES

- Students will eat in a designated area and will be distanced to the extent possible.
- Students will use proper hand hygiene and hand sanitizer stations will be available.

RECESS AND FREE PLAY

- Recess times will be staggered so smaller groups are on the playground.
- Children will sanitize/wash their hands at the beginning and end of recess.

FACILITIES CLEANING

The safety of our employees and students is our priority. Upon reopening, our schools have been completely cleaned and disinfected and we will continue to adhere to all necessary safety precautions. Doss CCSD will institute more frequent cleaning practices, including additional cleaning/sanitizing by custodial staff.

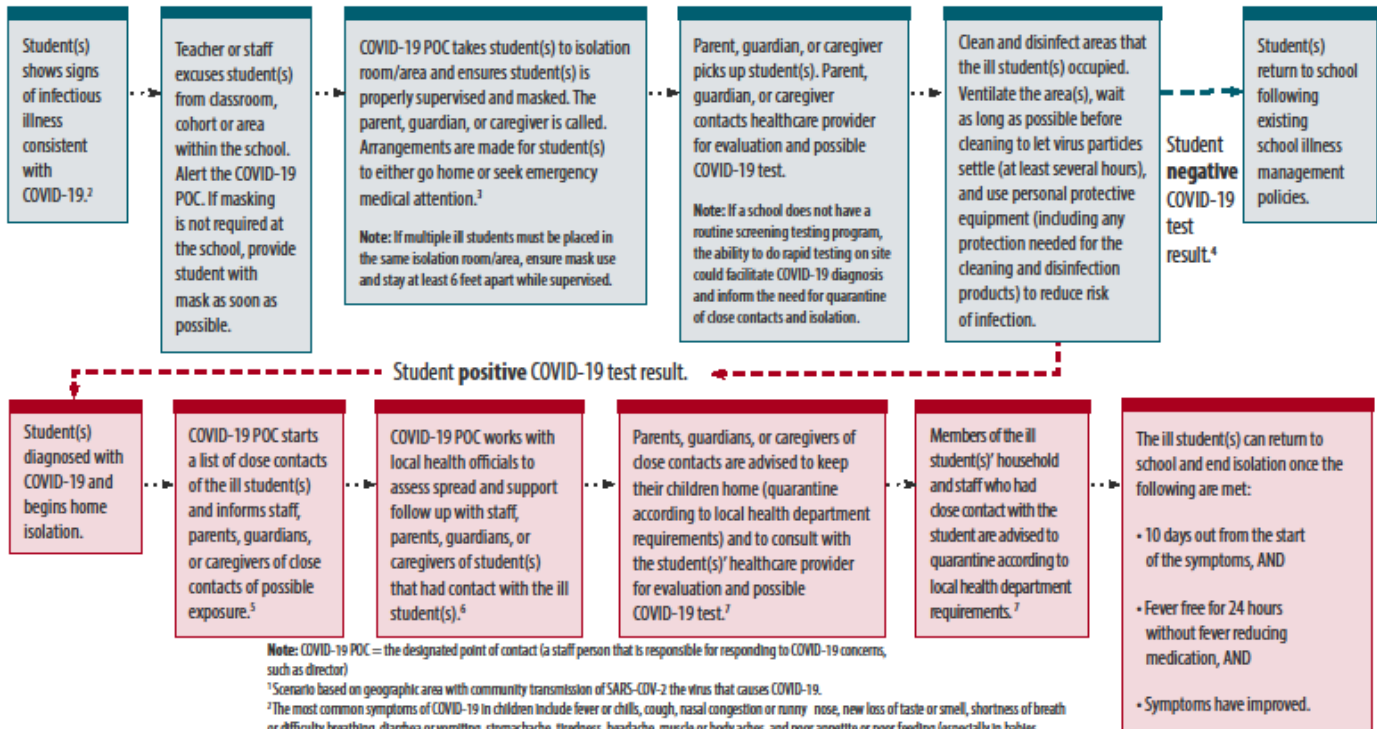
We will also provide the opportunity for children to clean their own spaces before and after they are used, in ways that are safe and developmentally appropriate. Various deep cleaning and disinfection protocols will be used according to public health guidance in the event of positive or suspected COVID cases.

RESOURCES: Health and Education Chart

Centers for Disease Control:

What to Do if a Student Becomes Sick or Reports a New COVID-19 Diagnosis at School

WHAT TO DO IF A STUDENT BECOMES SICK OR REPORTS A NEW COVID-19 DIAGNOSIS AT SCHOOL¹



Note: COVID-19 POC = the designated point of contact (a staff person that is responsible for responding to COVID-19 concerns, such as director)

¹ Scenario based on geographic area with community transmission of SARS-CoV-2 the virus that causes COVID-19.

² The most common symptoms of COVID-19 in children include fever or chills, cough, nasal congestion or runny nose, new loss of taste or smell, shortness of breath or difficulty breathing, diarrhea or vomiting, stomachache, tiredness, headache, muscle or body aches, and poor appetite or poor feeding (especially in babies under 1 year old).

³ Schools that do not have a universal mask requirement could require masking by students, teachers, and staff if they are experiencing onset of upper respiratory infection symptoms at school while waiting to be picked up or leave the school.

⁴ With no known close contact.

⁵ Close contact is defined as someone who was within 6 feet for a total of 15 minutes or more within 2 days prior to illness onset, regardless of whether the contact was wearing a mask. See exception in the definition for the exclusion of students in the K-12 indoor classroom: <https://www.cdc.gov/coronavirus/2019-ncov/php/contact-tracing/contact-tracing-plan/appendix.html#contact>

⁶ To the extent allowable by applicable laws regarding privacy.

⁷ CDC guidance provides that people who are fully vaccinated and do not have COVID-19 symptoms do not need to quarantine, but should get tested after an exposure to someone with COVID-19.



[cdc.gov/coronavirus](https://www.cdc.gov/coronavirus)

CS 52289-C August 4, 2021 3:54 PM

RESOURCES: Health and Education

Doss CCSD Information:	https://dossccsd.org https://www.facebook.com/DossSchoolDistrict/
GA-38 Executive Order:	https://gov.texas.gov/uploads/files/press/EO-GA-38_continued_response_to_the_COVID-19_disaster_IMAGE_07-29-2021.pdf
TEA COVID-19 Guidance	https://tea.texas.gov/texas-schools/health-safety-discipline/covid/coronavirus-covid-19-support-and-guidance
TEA Public Health Orders:	https://tea.texas.gov/texas-schools/health-safety-discipline/covid/covid-19-support-public-health-orders
CDC: COVID-19	https://www.cdc.gov/coronavirus/2019ncov/index.html
CDC: Back to School	https://www.cdc.gov/coronavirus/2019-ncov/groups/families-children.html
CDC: Toolkit for K-12 Schools	https://www.cdc.gov/coronavirus/2019-ncov/communication/toolkits/schools.html
CDC: Guidance Documents	https://www.cdc.gov/coronavirus/2019-ncov/community/schools-childcare/
CDC: What to Expect	https://www.cdc.gov/coronavirus/2019-ncov/groups/expect-school-child-care.html
CDC: Families & Children	https://www.cdc.gov/coronavirus/2019-ncov/groups/families-children.html?CDC_AA_refVal=https%3A%2F%2Fwww.cdc.gov%2Fcoronavirus%2F2019-ncov%2Fcommunity%2Fschools-childcare%2Fdecision-tool.html
CDC: COVID Data Tracker	https://covid.cdc.gov/covid-data-tracker/#datatracker-home

Revisions Added As Necessary

Release 2.0 08.23.21, Page 5

Per Attached TEA Public Health Guidance 08.19.21

The district will follow the required notification process released by the Texas Education Agency in a release on August 19, 2021.



Public Health Guidance

August 19, 2021

The guidance in this document is authorized by Executive Order GA-38, which has the effect of state law under Section 418.012 of the Texas Government Code. Executive Order GA-38 provides TEA with the legal authority to publish requirements for the operation of public school systems during the COVID-19 pandemic. This document takes effect immediately, replacing all prior guidance. TEA recommends that public school systems consult with their local public health authorities and local legal counsel before making final decisions regarding the implementation of this guidance. This guidance is subject to change as new information becomes available.

This guidance addresses:

- On-campus instruction
- Non-UIL extracurricular sports and activities
- Any other activities that students must complete

For guidance on matters related to school system staff, please refer [here](#). Additionally, as a reference for practices recommended by the CDC, see [here](#).

Required Actions if Individuals with Test-Confirmed Cases Have Been in a School

1. If an individual who has been in a school is test-confirmed to have COVID-19, the school must notify its [local health department](#), in accordance with applicable federal, state and local laws and regulations, including confidentiality requirements of the [Americans with Disabilities Act \(ADA\)](#) and Family Educational Rights and Privacy Act (FERPA).
2. Upon receipt of information that any teacher, staff member, student, or visitor at a school is test-confirmed to have COVID-19, the school must submit a report to the Texas Department of State Health Services via an online form. The report must be submitted each Monday for the prior seven days (Monday-Sunday).
3. Consistent with school notification requirements for other communicable diseases, and consistent with legal confidentiality requirements, schools must notify all teachers, staff, and families of all students in a classroom or extracurricular or after-school program cohort if a test-confirmed COVID-19 case is identified among students, teachers or staff who participated in those classrooms or cohorts.

Masks

Please note, mask provisions of GA-38 are not being enforced as the result of ongoing litigation. Further guidance will be made available after the court issues are resolved.

Students Who Have COVID-19

As provided in this [Department of State Health Services \(DSHS\) Rule](#), school systems must exclude students from attending school in person who are actively sick with COVID-19, who are

suspected of being actively sick with COVID-19, or who have received a positive test result for COVID-19, and must immediately notify parents if this is determined while on campus.

Parents must ensure they do not send a child to school on campus if the child has COVID-19 symptoms or is test-confirmed with COVID-19, until the conditions for re-entry are met. See the [DSHS rule](#) for more details, including the conditions for ending the exclusion period and returning to school.

During the exclusion period, the school system may deliver remote instruction consistent with the practice of remote conferencing outlined in the proposed *Student Attendance Accounting Handbook* (SAAH) rules, as described [here](#).

To help mitigate the risk of asymptomatic individuals being on campuses, school systems may provide and/or conduct recurring COVID-19 testing using rapid tests provided by the state or other sources. Testing can be conducted with staff. With prior written permission of parents, testing can be conducted with students.

Students Who Are Close Contacts

As a reference, close contact determinations are generally based on guidance [outlined by the CDC](#), which notes that individuals who are fully vaccinated may not need to follow the stay-at-home period.

As noted above, public health authorities will be notified of all positive cases in schools. While school systems are not required to conduct COVID-19 case investigations, local public health entities have authority to investigate cases and are currently engaged in cooperative efforts on that front. Participation by individuals in these investigations remains voluntary. If school systems are made aware that a student is a close contact, the school system must notify the student's parents.

Parents of students who are determined to be close contacts of an individual with COVID-19 may opt to keep their students at home during the recommended stay-at-home period. Parents who opt to send their children to school in the two weeks following exposure are encouraged to closely monitor their children for symptoms.

For individuals who are determined to be close contacts, a 14-day stay-at-home period was previously advised by the CDC based on the incubation period of the virus. CDC has since updated their guidance, and the stay-at-home period can end for students experiencing no symptoms on Day 10 after close contact exposure, if no subsequent COVID-19 testing is performed.

Alternately, students can end the stay-at-home period if they receive a negative result from a PCR acute infection test after the close contact exposure ends.

During the stay-at-home period, the school system may deliver remote instruction consistent with the practice of remote conferencing outlined in the proposed *Student Attendance Accounting Handbook* (SAAH) rules, as described [here](#).

Staff Who Have COVID-19 or Who are Close Contacts

Similar to students, school systems must exclude staff from attending school in person who are actively sick with COVID-19, who are suspected of being actively sick with COVID-19, or who have received a positive test result for COVID-19. Staff may return when the re-entry conditions have been met, as described in the [DSHS rule](#) used for students.

For staff who are not fully vaccinated who meet the close contact threshold with a COVID-19 positive individual, it is recommended that the staff remain off campus during the stay-at-home period.

For staff who meet the close contact threshold with a COVID-19 positive individual, if these staff continue to work on campus, rapid testing must be performed at the start of the day, at least once every other day until the end of day 10.